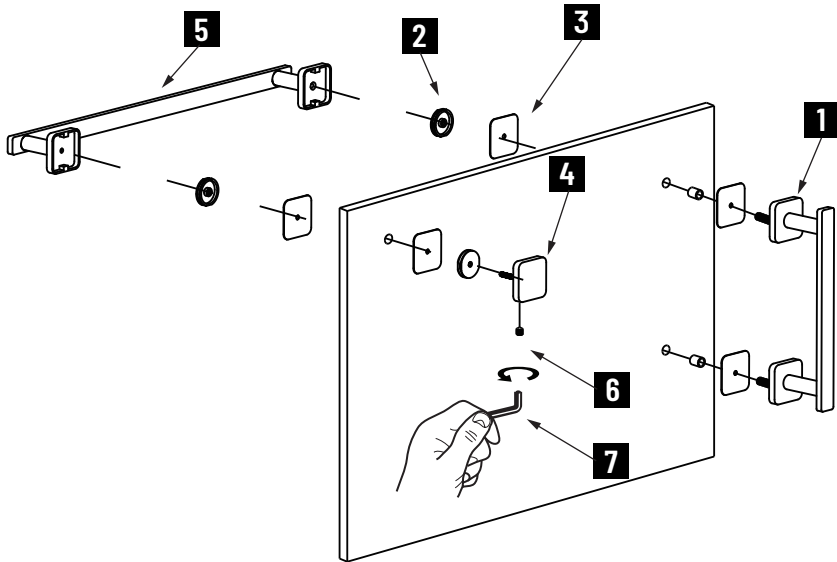


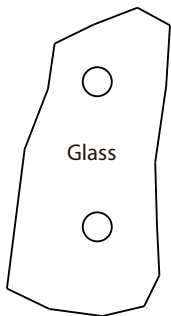
MILAN COLLECTION OFFSET SHOWER DOOR HANDLE

25470818/70824/71218/71224

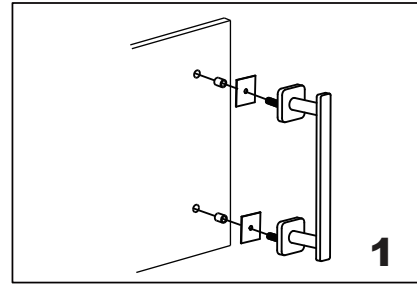


- 1. Vertical Handle
- 2. Fixing Bracket x
- 3. Clear Gasket x 4
- 4. End Cap x 2
- 5. Horizontal Handle
- 6. Set Screw M5 x 2
- 7. Allen Key 2.5mm x 1

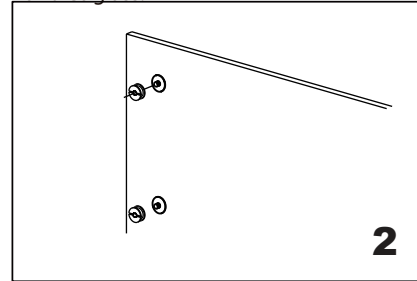
GLASS INFO



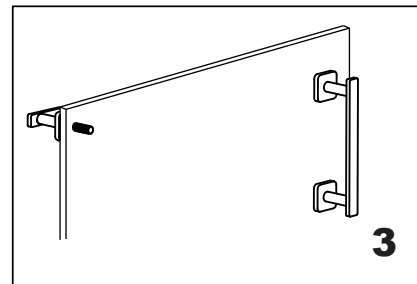
| Glass Hole C-C Distance | | |
|-------------------------|------------|------------------------|
| A | 6"/152mm | 6" Shower Door Handle |
| | 8"/203mm | 8" Shower Door Handle |
| | 12"/305mm | 12" Shower Door Handle |
| | 18"/457mm | 18" Shower Door Handle |
| | 24"/610mm | 24" Shower Door Handle |
| B | 1/2"(12mm) | Glass Hole Diameter |
| C | 6-12mm | Glass Thickness |



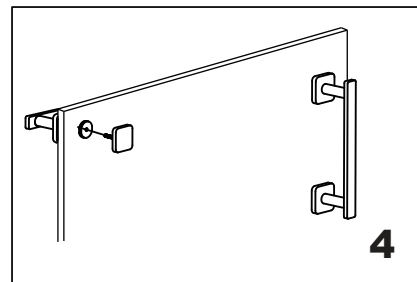
Install the vertical handle (bolt) through the glass holes, make sure the rubber gaskets are between handle & glass.



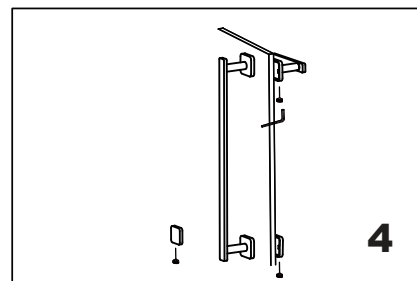
Screw in the fixing brackets into the handle bolts.



Install the horizontal handle (bolt) through the glass, make sure the set screws holes in the bottom.



Screw in the bracket onto the bolt, fix the backing (end cap) onto the bracket



Fix the set screws on the end caps, tighten it to avoid loose from fixing brackets.