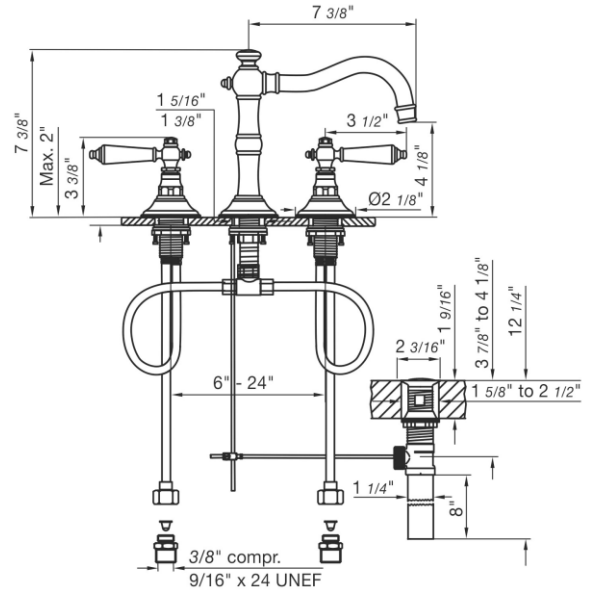


# REVERE LEVER - FV201/58L

Widespread lavatory faucet with push-down pop-up drain assembly.  
 Juego de lavatorio con desagüe "pop up".

FRANZ  
VIEGENER



## FEATURES

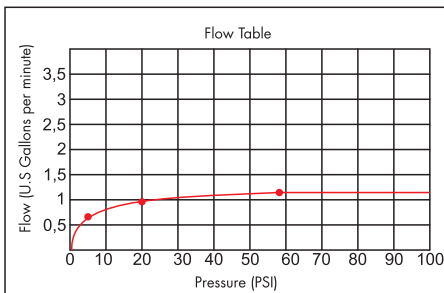
### CARACTERÍSTICAS

- All brass construction.  
Producto realizado íntegramente en latón.
- Brass valve bodies.  
Cuerpos de válvulas fabricados en latón.
- Quarter-turn ceramic cartridges.  
Cartuchos cerámicos de 1/4 de giro.
- Stationary spout with recessed aerator device.  
Pico con aireador oculto.
- Flexible SS connectors with sediment screens.  
Flexibles con conectores SS y filtro de sedimento.

## FLOW RATE

### CAUDAL

- Maximum flow rate 1,2 gpm (4,5 l/min).  
Caudal máximo 1,2 gpm (4,5 l/min).



## COLOR / FINISHES

### COLOR / ACABADOS

- |  |                        |  |                        |  |                                |
|--|------------------------|--|------------------------|--|--------------------------------|
|  | PC<br>Polished Chrome. |  | PN<br>Polished Nickel. |  | BN<br>Brushed Nickel.          |
|  | BG<br>Brushed Gold.    |  | PG<br>Polished Gold.   |  | RG<br>Rose Gold.               |
|  | BK<br>Black Chrome.    |  | FB<br>Flat Black.      |  | UPB<br>Unlacked Polished Brass |

## ITEM DETAILS

### DETALLE DE PRODUCTO

## COMPLIANCE CERTIFICACIONES

