



E301-2

### Features

- Over 28 finishes including 13 PVD finishes
- All brass construction
- 8-5/16" spout center to center
- Single handle operation cartridge with ceramic disk
- Flexible braided hoses for ease of installation
- 1.2 gpm (4.5 L/min) max flow rate



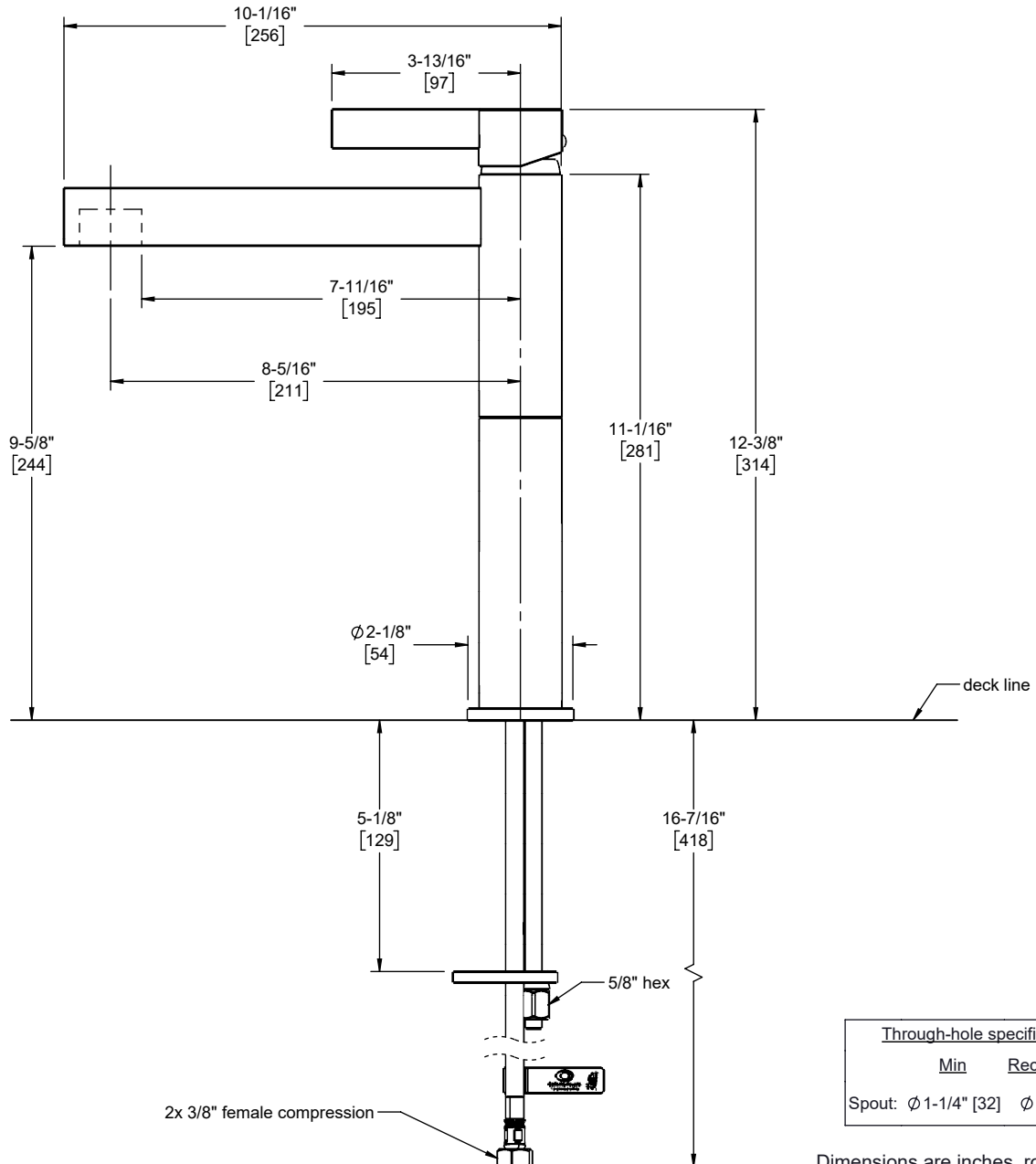
E301-2



### Codes/Standards Applicable

Product meets or exceeds the following:

- ASME A112.18.1/CSA B125.1
- NSF/ANSI 61 & NSFANSI 372
- CEC / DOE
- EPA WaterSense High Efficiency Lavatory Faucet
- Commonwealth of MA
- ADA compliant



Through-hole specifications	
Min	Recommended
Spout: $\varnothing$ 1-1/4" [32]	$\varnothing$ 1-1/2" [38]

Dimensions are inches, rounded to 1/16"  
[Dimensions in brackets are mm, rounded to 1mm]